



# COSCO HEAVY TRANSPORT

## — Da Type 2 Class 1 —



### Vessel Name

Da Tong Yun  
Da Hong Xia  
Da Cai Yun

### Built

2011  
2011  
2011

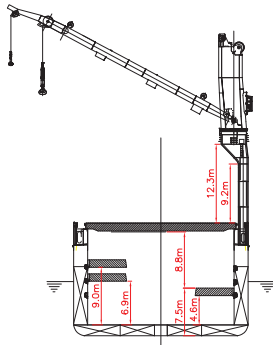
### Main Data

Flag:	Hong Kong
Classification:	CCS
Speed:	14.2 knots
LOA:	166.5 m (546.26 ft)
Breadth moulded:	27.4 m (89.9 ft)
Depth:	14.2 m (46.6 ft)
Draft:	10.1 m (33.14 ft)
Deadweight:	28,450 mt
SWL	45 mt x 1 + 200 mt x 2 (Comb 400 mt)
TEU	1735
Adjustable Tween Deck	

[www.coscoht.com](http://www.coscoht.com)

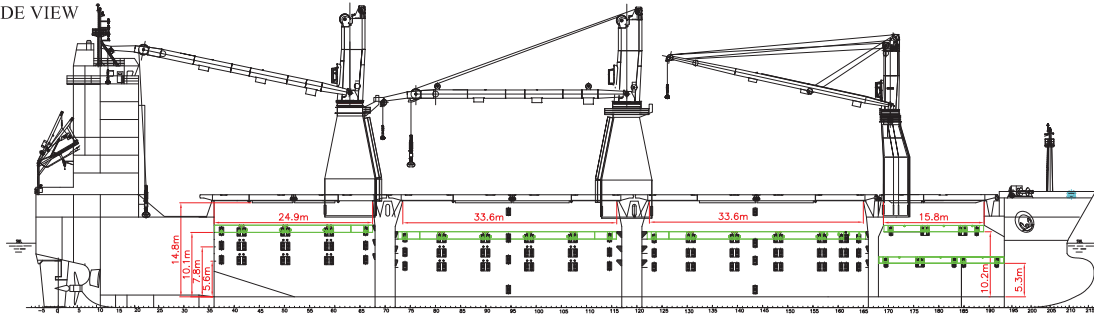


— Da Type 2 Class 1 —

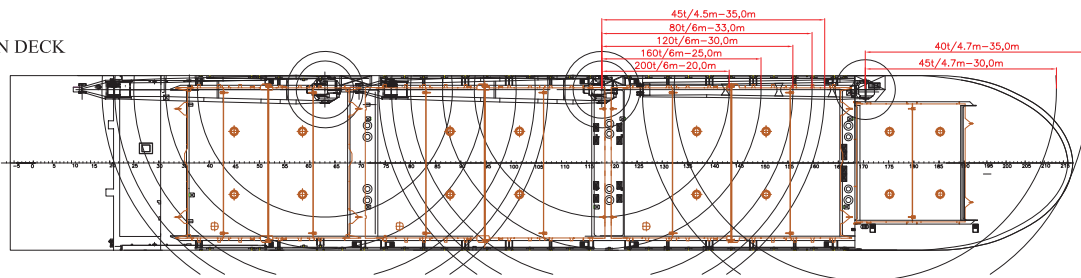


TRANSVERSE SECTION FOR CARGO HOULD 2,3

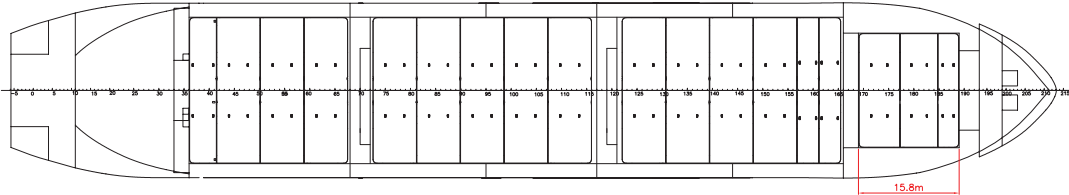
SIDE VIEW



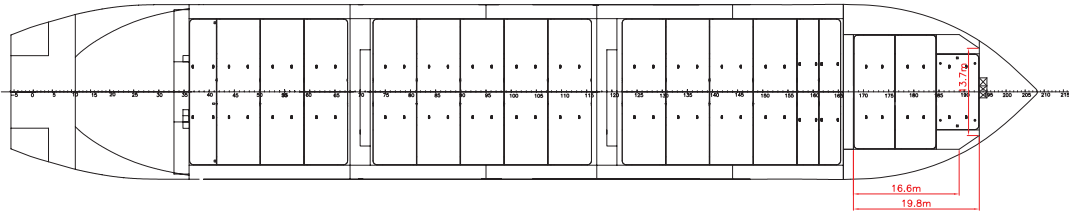
MAIN DECK



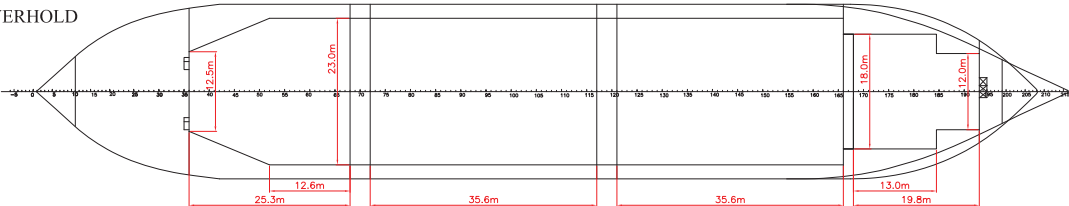
TWENDECK / HIGH



TWENDECK / LOW



LOWERHOLD



COSCO Shipping Americas Inc.  
Telephone: +1-281-497-4300  
E-mail: [Americas@coscoht.com](mailto:Americas@coscoht.com)

COSCO Shipping Europe B.V.  
Telephone: +31-10-24 04 777  
E-mail: [Europe@coscoht.com](mailto:Europe@coscoht.com)