



# COSCO HEAVY TRANSPORT

## — Log Carrier —



<b><u>Vessel Name</u></b>	<b><u>Built</u></b>	<b><u>Flag</u></b>
Kun Lun Shan	2010	Hong Kong
Tai Hang Shan	2010	Hong Kong
Jin Gang Shan	2010	Hong Kong
Wu Yi Shan	2010	Hong Kong
Jin Wang Ling	2010	Hong Kong
Jin Xing Ling	2010	Hong Kong
Jin Yuan Ling	2009	Hong Kong
Jin Guang Ling	2009	Hong Kong
Jin Da Ling	1998	Panama
Rui Chang Hai	1997	China
Xi Chang Hai	1997	China
Jing Niu Ling	1992	China
Jin Sha Ling	1990	China

### Main Data

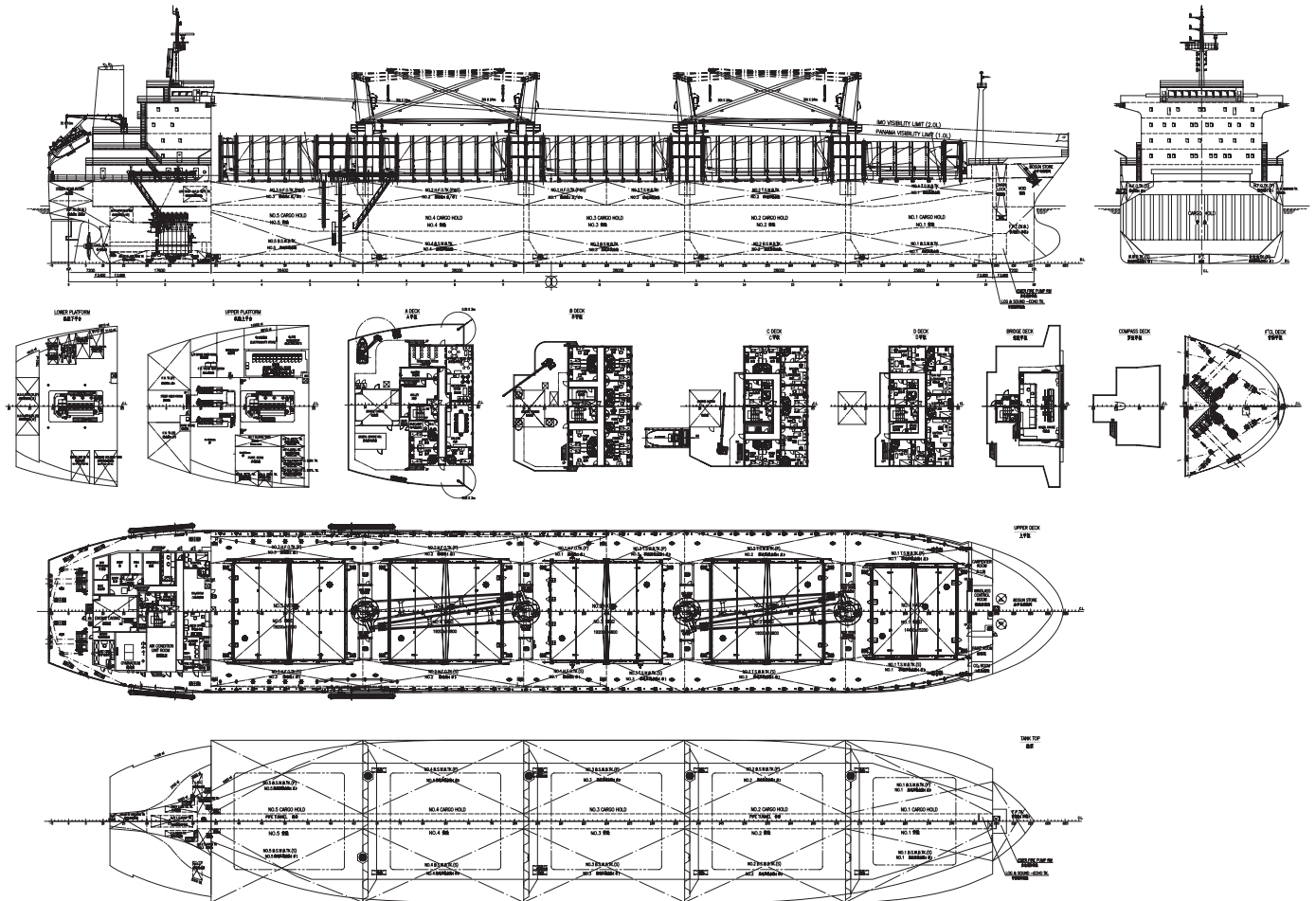
Flag:	China/Hong Kong/Panama
Classification:	CCS
Speed:	13.5 knots
LOA:	165-177.5 m (495-532.5 ft)
Breadth moulded:	26-28.2 m (78-84.6 ft)
Depth:	14.1 m (46.26 ft)
Draft:	10 m (30 ft)
Deadweight:	27,276-31,916 mt
SWL	30 mt x 4
Hatch/Hold	5/5

[www.coscoht.com](http://www.coscoht.com)



# COSCO HEAVY TRANSPORT

## — Log Carrier —



**COSCO Shipping Americas Inc.**  
24022 Cinco Village Center Blvd.,  
Suite 110  
Katy, Texas 77494  
United States of America  
Telephone: +1-281-497-4300  
Fax: +1-281-574-4325  
E-mail: [Americas@coscoht.com](mailto:Americas@coscoht.com)

**COSCO Shipping Europe B.V.**  
Strevelsweg 700,  
Suite 608/609  
3083 AS Rotterdam  
The Netherlands  
Telephone: +31-10-24 04 777  
Fax: +31-10-41 01 869  
E-mail: [Europe@coscoht.com](mailto:Europe@coscoht.com)